

HOW TO FIND A QUALITY DAYCARE OR PRESCHOOL

Easily search
and find quality
providers in
Philadelphia.



1

UNDERSTAND WHY
QUALITY MATTERS

2

IDENTIFY WHAT'S
MOST IMPORTANT
TO YOU

3

RESEARCH YOUR
OPTIONS

4

VISIT AND ASK
QUESTIONS

5

MAKE YOUR
CHOICE

[GREATPHILLYSCHOOLS.ORG](https://greatphillyschools.org)

great
PHILLY
SCHOOLS



Understand why quality matters

When you choose a quality preschool or daycare, you are choosing a program where:

1	Your child is safe and secure while you are at school or work.
2	Your child's teachers support and challenge your child to explore and learn new things.
3	Your child learns academic skills, like age-appropriate vocabulary, letters and numbers, as well as how to get along with others and follow directions.
4	You feel supported through regular communication about your child's progress.
5	Your child is more likely to be ready for kindergarten, do well in school, graduate high school and go to college.

Get started by looking for programs that participate in Keystone STARS or hold national or regional accreditations. Child care programs with a Keystone STARS rating are ranked from one to four, with four being the highest quality.

You should visit a center before sending your child there to make sure it is the right quality choice for you.

Visit greatphillyschools.org to find quality daycares and preschools in Philadelphia!



Identify what's most important to you

How important are the following factors to you?
(CIRCLE YOUR CHOICE)

LOCATION	VERY IMPORTANT	IMPORTANT	SOMEWHAT IMPORTANT	NOT IMPORTANT
COST	VERY IMPORTANT	IMPORTANT	SOMEWHAT IMPORTANT	NOT IMPORTANT
CLEANLINESS	VERY IMPORTANT	IMPORTANT	SOMEWHAT IMPORTANT	NOT IMPORTANT
STAFF	VERY IMPORTANT	IMPORTANT	SOMEWHAT IMPORTANT	NOT IMPORTANT
SCHOOL READINESS	VERY IMPORTANT	IMPORTANT	SOMEWHAT IMPORTANT	NOT IMPORTANT
HOURS	VERY IMPORTANT	IMPORTANT	SOMEWHAT IMPORTANT	NOT IMPORTANT
TYPE OF PROGRAM	VERY IMPORTANT	IMPORTANT	SOMEWHAT IMPORTANT	NOT IMPORTANT
KEYSTONE STARS RATING AND/OR ACCREDITATION	VERY IMPORTANT	IMPORTANT	SOMEWHAT IMPORTANT	NOT IMPORTANT

What else is important to you?

To learn more about the types of early childhood programs, including income-eligible programs, visit bit.ly/TypesofCare.



Research your options

Visit greatphillyschools.org to research and compare quality daycares and preschools. Search by location, age group, Keystone STARS rating, subsidy, type of program, open seats, services and more.

(WRITE YOUR TOP CHOICES BELOW)

NAME	NOTES



Visit and ask questions

Narrow your top choices by visiting each of the centers and asking questions. Use the following checklist on each of your visits.

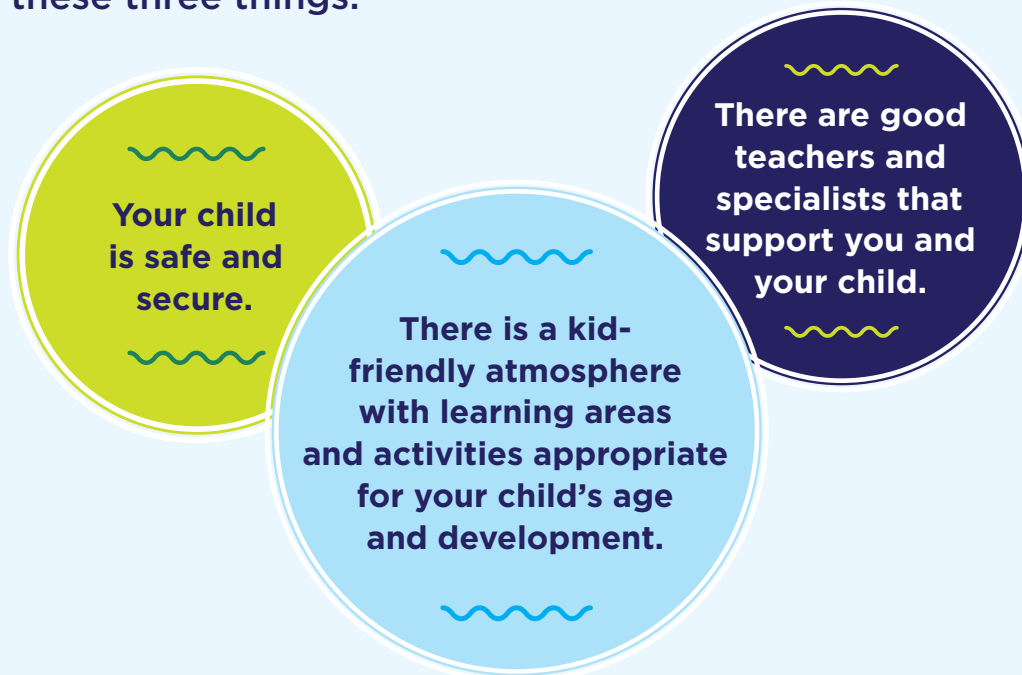
SAFETY & QUALITY	
YES / NO	Has the program earned a Keystone STARS 3 or 4 rating, NAEYC, or other accreditation?
YES / NO	Are safety precautions (like a fire escape and emergency plan) visible and accessible to all?
YES / NO	Do bathroom and kitchen facilities look and smell clean?
CLASSROOM & ACTIVITIES	
YES / NO	Are there soft spaces for reading, relaxing, and quiet games, as well as active play?
YES / NO	Do children have the opportunity to play every day? Follow up: What does a typical day look like?
YES / NO	Is the quantity of toys and materials sufficient?
STAFF & PARENT INVOLVEMENT	
YES / NO	Is the staff to child ratio appropriate? For infants - 1 adult to every 4 children; young toddlers 1:5; older toddlers 1:6; preschool 1:10.
YES / NO	Do staff appear lively, smiling, and positive while engaging the children in activities?
YES / NO	Are families welcomed in the program and respected by staff? Follow up: How do staff keep parents up to date?

For more suggested questions, visit bit.ly/VisitChecklist.



Make your choice

Ultimately, where you send your child is a matter of preference based on what is right for your family. No matter the type of program you choose, look for these three things:



Visit greatphillyschools.org now to start your search!

Have questions or need further assistance? Email us at info@greatphillyschools.org.

